



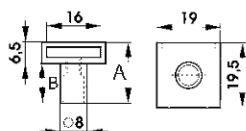
Arretierungsstift / Arresting pin

Material: Zamak / Zinc alloy

Oberfläche: vernickelt / Finish: Nickel pl.

60

A	B	Art. No.
12,5mm	6,0mm	1212.130
16,5mm	10,0mm	1212.165
19,0mm	12,5mm	1212.190
23,0mm	16,5mm	1212.237
25,0mm	18,5mm	1212.257



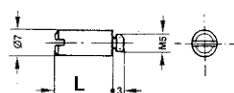
Sperrstift für Zentralverschlussstange mit vorgebohrten M5 Gewindelöchern
Arresting pin for central locking bar with predrilled M5 thread holes

Material: Stahl / Steel

Oberfläche / Finish: Vernickelt / Nickel plated

20

L =	Art. No.
8mm	1212.008
11mm	1212.011
13,5mm	1212.013
16mm	1212.016



Zentralverschlussstange siehe Seite 1.037
Central locking bar please refer to page 1.037

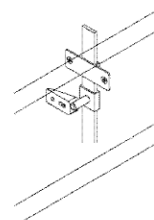
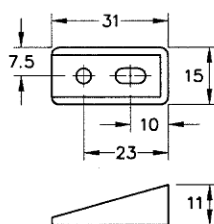


Schubladenstopper / Drawer stop wedge

Material: Kunststoff / Plastic

100

Art. No.
Schwarz / Black 1503.005

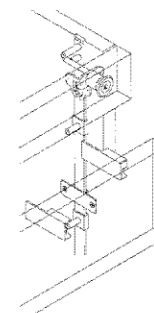
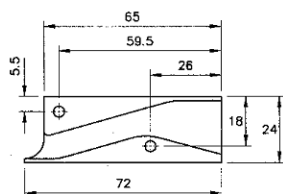


Sperrkurve zum Anschrauben
Anti-tilt device screw-on type

Material: Kunststoff / Plastic

80

Version / Type	Art. No.
Links / Left	1213.005
Rechts / Right	1213.010



Maßangaben unverbindlich / Dimensions not binding