

Glastür-Stiftschloss für Glasstärke 4-8mm
stufenlos verstellbar
Glass door pin lock for glass thickness of
4-8mm freely adjustable

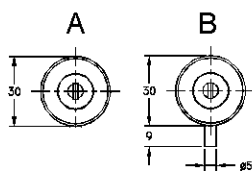
Material: Zamak / Zinc alloy

20

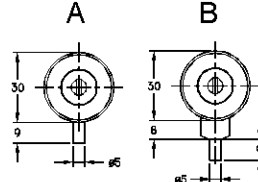
Modell A - ohne Verlängerung des Schließstiftes
Type A - without locking pin extension

Oberfläche / Finish	Art. No.
Vernickelt / Nickel plated	1281.100
Edelstahl Finish / Stainless steel finish	1280.100

Geöffnet / Open position



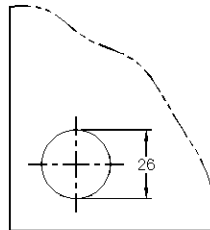
Geschlossen / Closed position



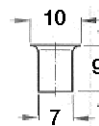
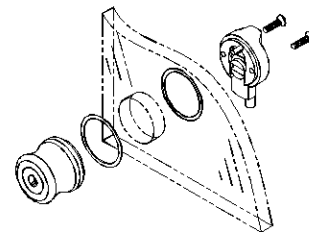
Modell B - mit Verlängerung des Schließstiftes
Type B - with locking pin extension

Oberfläche / Finish	Art. No.
Vernickelt / Nickel plated	1281.400
Edelstahl Finish / Stainless steel finish	1280.400

Lochbild für die Glasbohrung
Diagram for glass drilling



Installationsdiagramm
Installation diagram

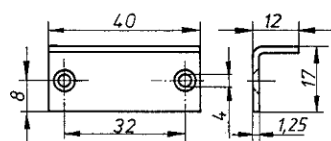


Buchse / Socket

Material: Stahl / Steel

20

Oberfläche / Finish	Ø	Art. No.
Vernickelt / Nickel pl.	7mm	4303.701



Schließblech / Striking plate

Material: Stahl / Steel

20

	Art. No.
Vernickelt / Nickel plated	1451.060