

PERMA PRODUCTS
Winbourne Estate,
Brookvale, NSW 2100
P. 1300 467 068



CAUTION

Never leave child unattended. This product is not a substitute for adult supervision. Stop using if child can open it. Anything sharp, toxic or dangerous should be completely inaccessible to children.

WARRANTY

Our goods come with guarantees that cannot be excluded under the Australian Consumer Law. You are entitled to a replacement or refund for a major failure and for compensation for any other reasonably foreseeable loss or damage. You are also entitled to have the goods repaired or replaced if the goods fail to be of acceptable quality and the failure does not amount to a major failure'. Simply contact Perma Products ph: 1300 467 068 within 12 months of purchase together with details of the failure and original purchase receipt.

CARE

CLEANING

Using a soft damp cloth simply wipe gate, dry after cleaning. Do not use chemical or abrasive cleaners.

MAINTENANCE

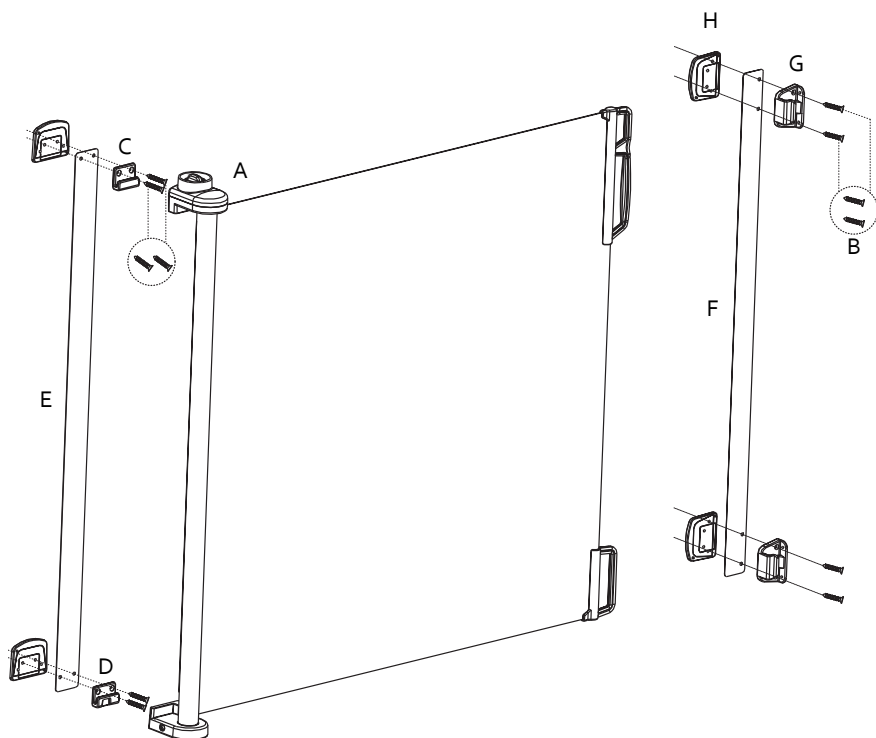
Regularly check gate is in working order and mounts are tight. Additional and replacement parts should be obtained from the manufacturer.



Retractable Gate Instructions

Important! Keep for future Reference

CONTENT



A – Gate Assembly
C – Upper Gate Mount
E – Guide 1
G – 2x Catch Mounts

B – 8x Screws & Plugs
D – Lower Gate Mount
F – Guide 2
H – Wall Spacers

WARNING

PLEASE READ CAREFULLY

Never leave children unattended when using this product.

Incorrect fitting or positioning of the product can be dangerous.

Do not use the product if any components are damaged or missing.

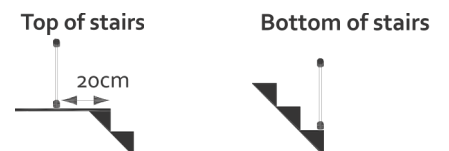
The product must not be fitted across windows.

Stop using the product if the child is capable of climbing it.

Danger to older children if climbing over the product.

Never install this product on glass doors. Install this product against reliable doors or walls.

If the product is used at the top of the stairs: in order to prevent child climbing downstairs, it should be positioned 20cm back from the top step.



If the product is used at the bottom of the stairs: in order to prevent child climbing upstairs, it should be positioned on the First step.

Do not put any goods that can be grabbed by children or pets near this product to prevent injury.

Before using this product, please check whether this product is loose and whether it needs to be tightened.

Make sure the product to be installed is straight and flat on the floor.

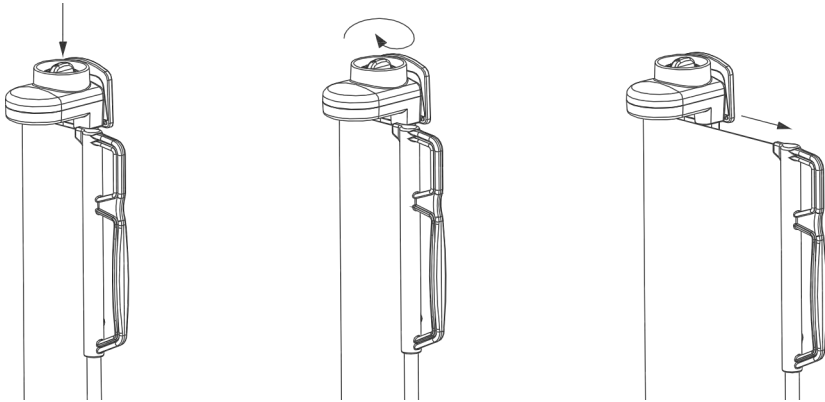
This product is intended for use with children from 6 to 24 months or small to medium pets.

OPERATION

TO EXTEND GATE

5. To unlock the mechanism, simply push down and turn the button clockwise, at the same time grasp the handle and pull evenly.
6. Release the button and continue pulling the handle toward the catches.
7. Hook the handle onto the catches ensuring both the top and bottom are aligned.

Note: When gate is retracting always hold the handle and guide the gate evenly back into its original position. Never let go of handle when gate is retracting.

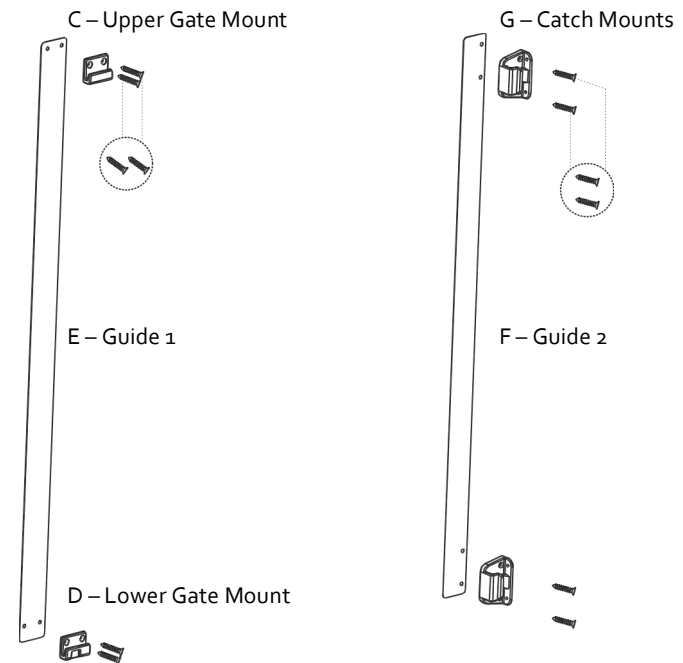


INSTALLATION

INSTALLATION WITHOUT SKIRTING/BASEBOARD

To install you will need a Phillips screwdriver, pencil, level and drill.

1. Place Guide 1 on the surface you want the Gate Assembly to be mounted to with the bottom of the guide flush with the floor, use a level to ensure the guide is straight. Note: leave 2cm between guide and the edge of the opening to ensure gate won't overhang edge. Repeat for Guide 2 on the opposite side of opening.
2. Use pencil to mark the center of each hole, and then remove both Guides.
3. Drill a 3mm pilot hole at each pencil mark for timber surfaces and for hardwall drill a 6mm hole and insert plugs. Note for all other surfaces use suitable fixings.
4. Align each mount in its correct position, use a Phillips screwdriver to tighten screws till each mount is secure.



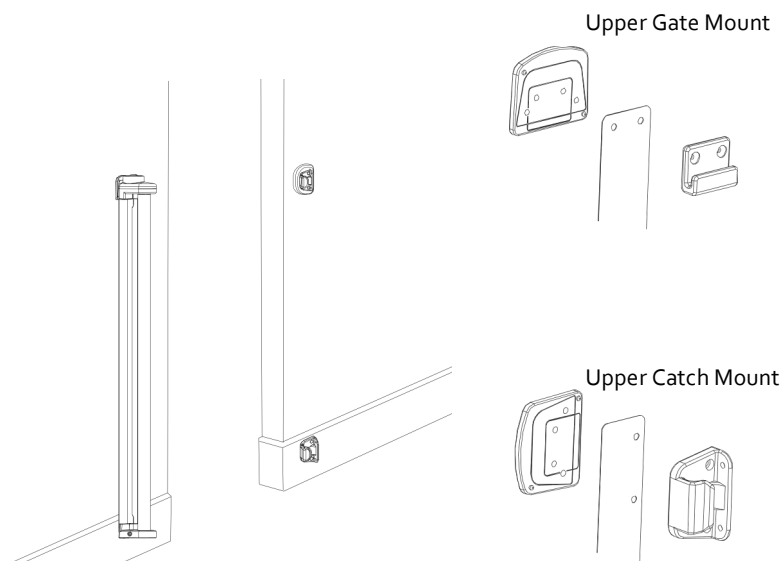
INSTALLATION

Installation with skirting/baseboard

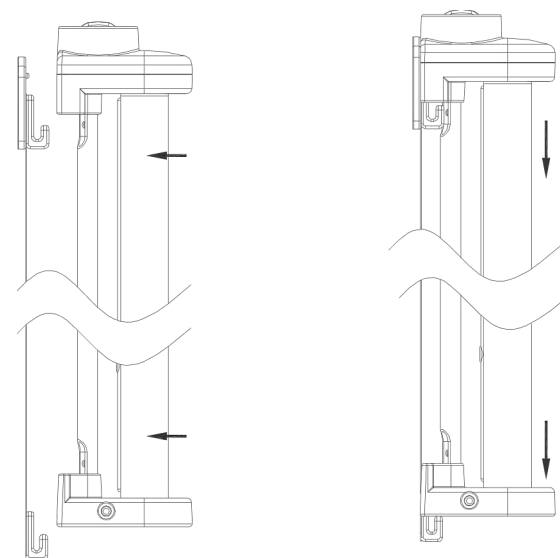
To help correct for the offset of a skirting board or baseboard spacers will be required. Only use spacers for the Upper Gate mount and the Upper Catch (parts C & G). Measure the width of your skirting/baseboard and use the closest number of spacers to fit this width.

To install you will need a **Phillips screwdriver, pencil, level and drill**.

1. Place Guide 1 on the surface you want the Gate Assembly to be mounted to with the bottom of the guide flush with the floor, use a level to ensure the guide is straight. Note: leave 2cm between guide and the edge of the opening to ensure gate won't overhang edge. Repeat for Guide 2 on the opposite side of opening.
2. Use pencil to mark the center of each hole, and then remove both Guides.
3. Drill a 3mm pilot hole at each pencil mark for timber surfaces and for hardwall drill a 6mm hole and insert plugs. Note for all other surfaces use suitable fixings.
4. Align each mount in its correct position, use a Phillips screwdriver to tighten screws till each mount is secure.



ASSEMBLY



Gate Assembly

1. Attach Gate Assembly to the Gate Mounts by aligning the gate directly above the mounts and sliding straight down over mounts. Check that the Gate assembly is flush against the wall and is locked firmly in place.
2. To remove gate from the mounts push and hold the lock release button while sliding the gate upwards.

