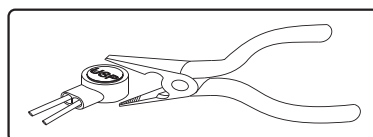
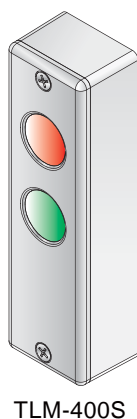
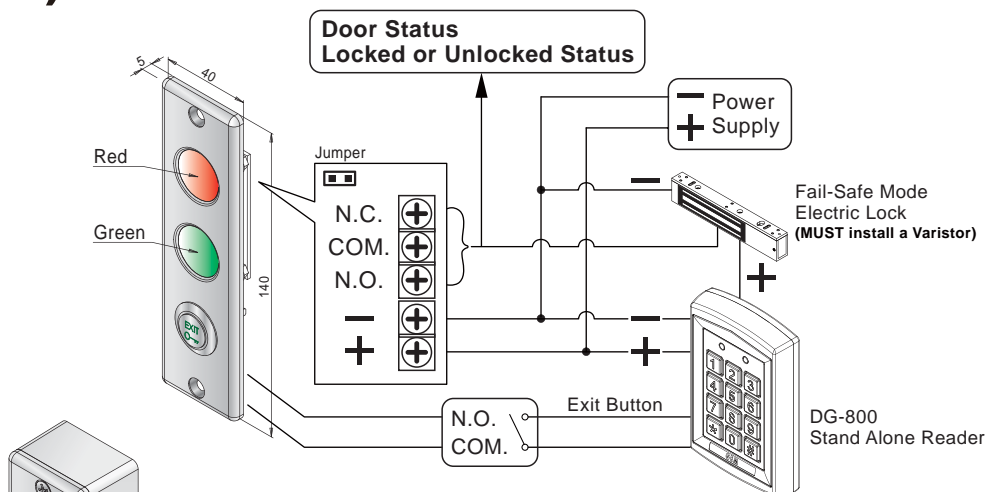
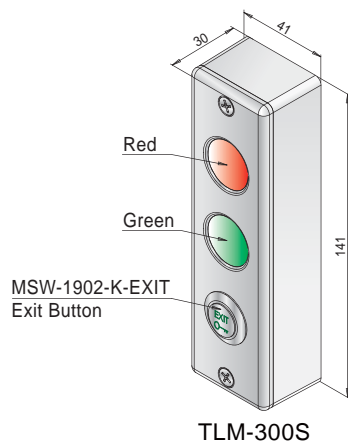


# TLM-300S/400S

## Door Status Indicator (Traffic Light)

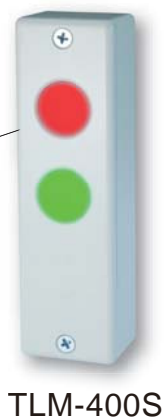
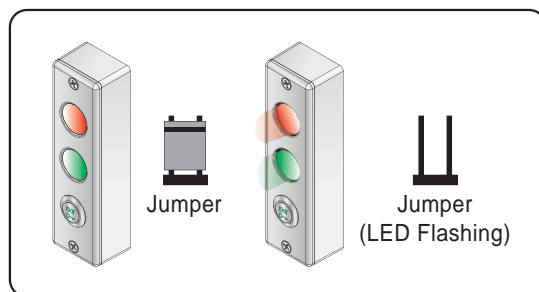
(Zinc Alloy w/powder coated finish)

Operating Voltage	12/24VDC
Current Draw	40mA/12VDC 50mA/24VDC

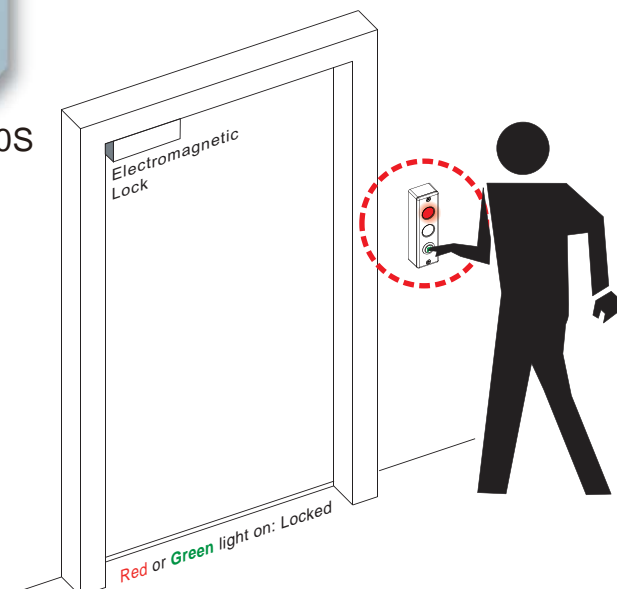


### Butt Splice (IDC) Connector

Place the wire inside the connector and use a crimp or plier to press down on the head of the connector evenly.



TLM-300S



Changeable LED color for locked or unlocked status